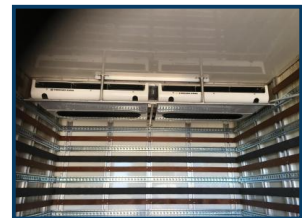


THOMAS TRUCKS

COMMERCIAL VEHICLE SALES & HIRE

MAN 18.480 XXL



£POA

MAN TGX XXL cab double sleeper, 3 seat cab, Fully air-conditioned cabin, Man sound system, Sun blinds, Full Air suspension front and rear, Thermo King Temperature controlled insulated body used for carrying fine art, Dimensions as follows, Internal 2.95 metre high/ 6.3 metre long/ 2.35 metre wide. Tailift Pallfinder 15 klg, platform size 2.5 metre wide 2.4 metre long. Wheel base 5.2 metre centre of front wheel to centre of rear wheel, 4.5 metre from behind cab to centre of rear axle. 315/60/225 Tyres low ride chassis, overall height 4.0 metre, VGB draw bar coupling.

Contract maintained regardless of co

Product Details

Product Details	
Category/Type	Rigid Trucks - Removal trucks
Make	MAN
Model	18.480 XXL
Year	2010
Mileage	360000 klm

The Loco Yard, Rushenden Road, Queenborough, Kent, ME11 5HS
Tel: +44 (0)1474 326655 Thomas: +44 (0)7584 351 151 John: +44 (0)7760 765707
www.tt-ex.com info@tt-ex.com