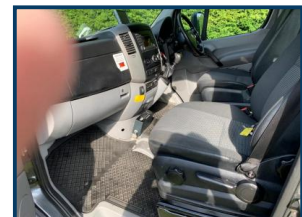
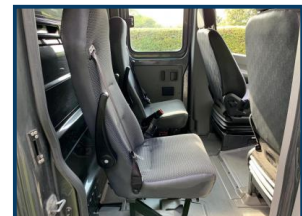


THOMAS TRUCKS

COMMERCIAL VEHICLE SALES & HIRE

Mercedes Sprinter 519 CDI



£POA

5Ton GVW, 4 Seater Crew Van, 12 FT Insulated Temperature Controlled Removal Box, Rear Barn Doors, Canterlever Taillift, Tie Rails, AIR SUSPENSION, Air Conditioning, Company Direct only be used for Fine Art, A very Rare spec Vehicle one of its kind, Finance Available call for details

Product Details	
Category/Type	RIGID TRUCKS 4x2 6x2 6x4 8x4
Make	Mercedes Sprinter
Model	519 CDI
Year	2013 13 REG
Mileage	180,000 KLMS

The Loco Yard, Rushenden Road, Queenborough, Kent, ME11 5HS
 Tel: +44 (0)1474 326655 Thomas: +44 (0)7584 351 151 John: +44 (0)7760 765707
 www.tt-ex.com info@tt-ex.com